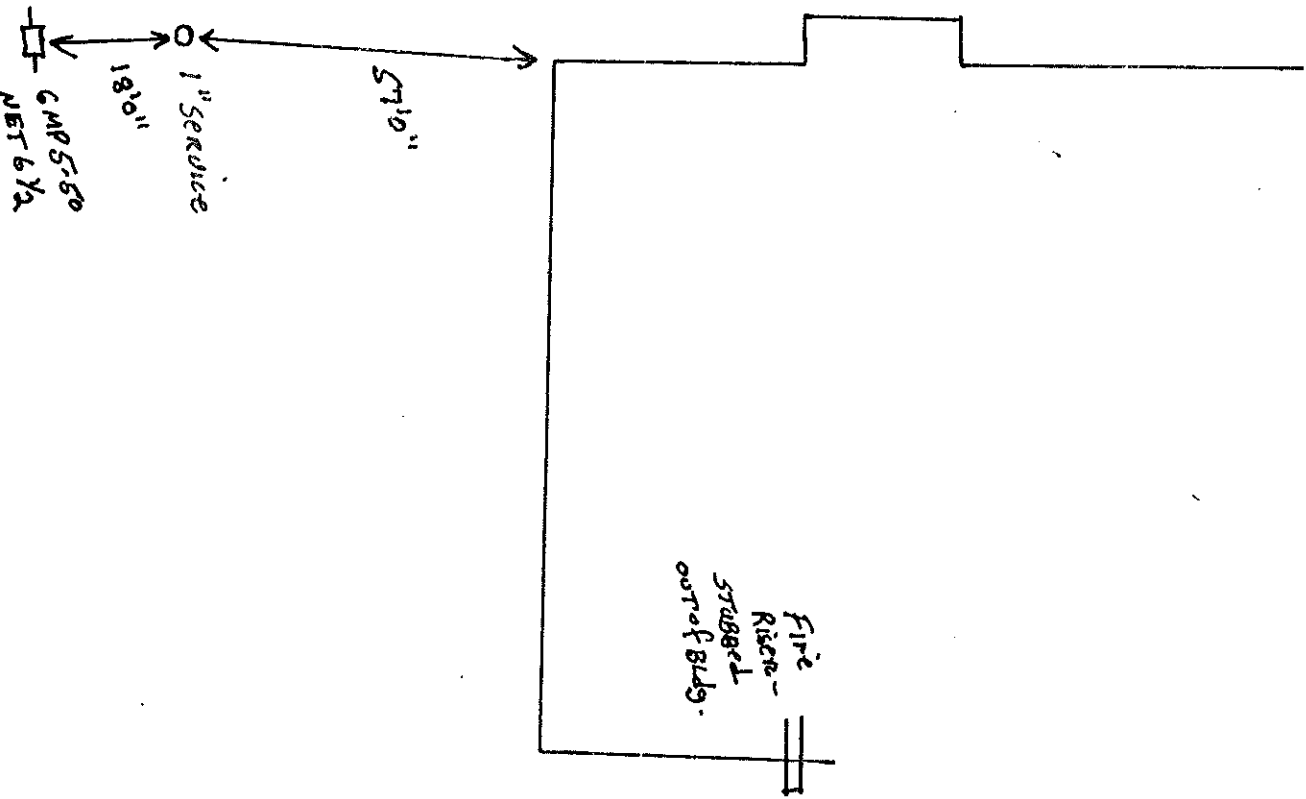
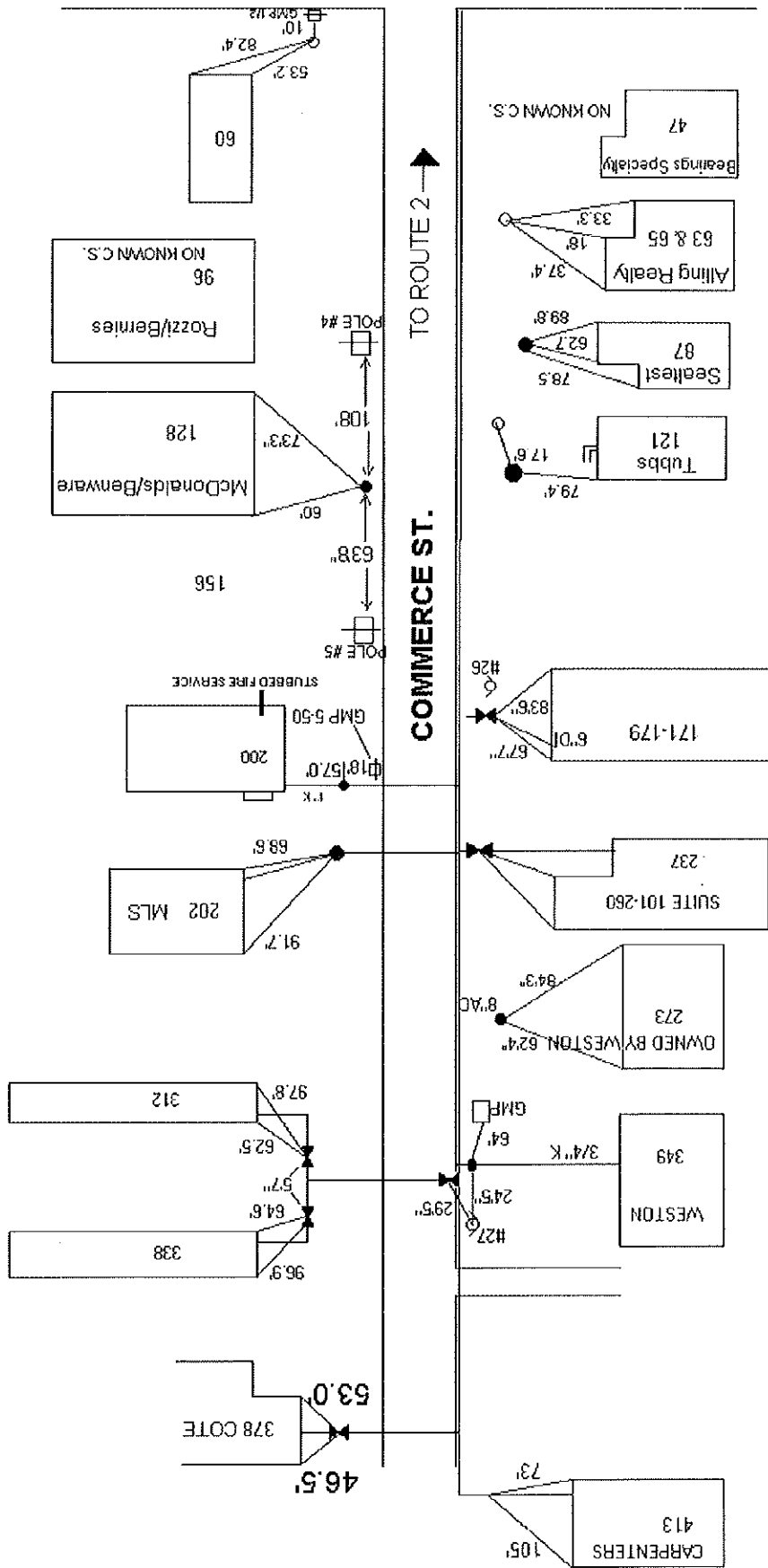
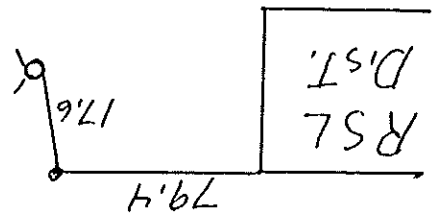
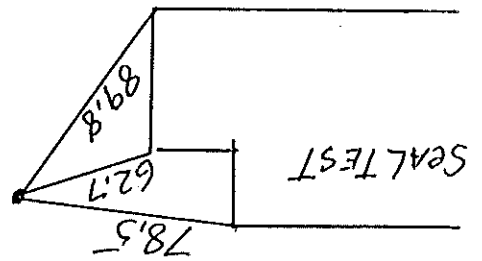
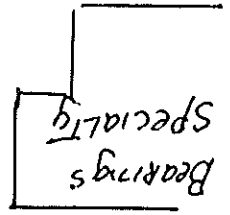


Lot 25  
Concrete  
Street



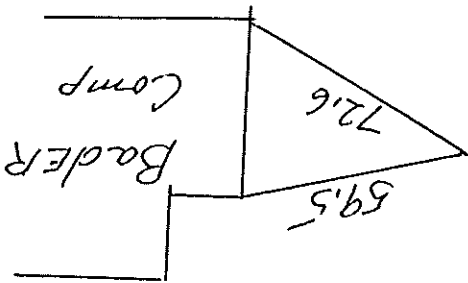
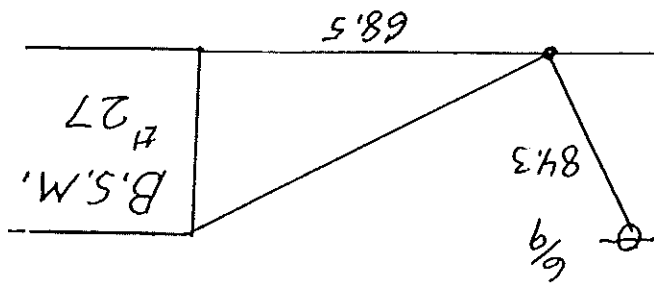


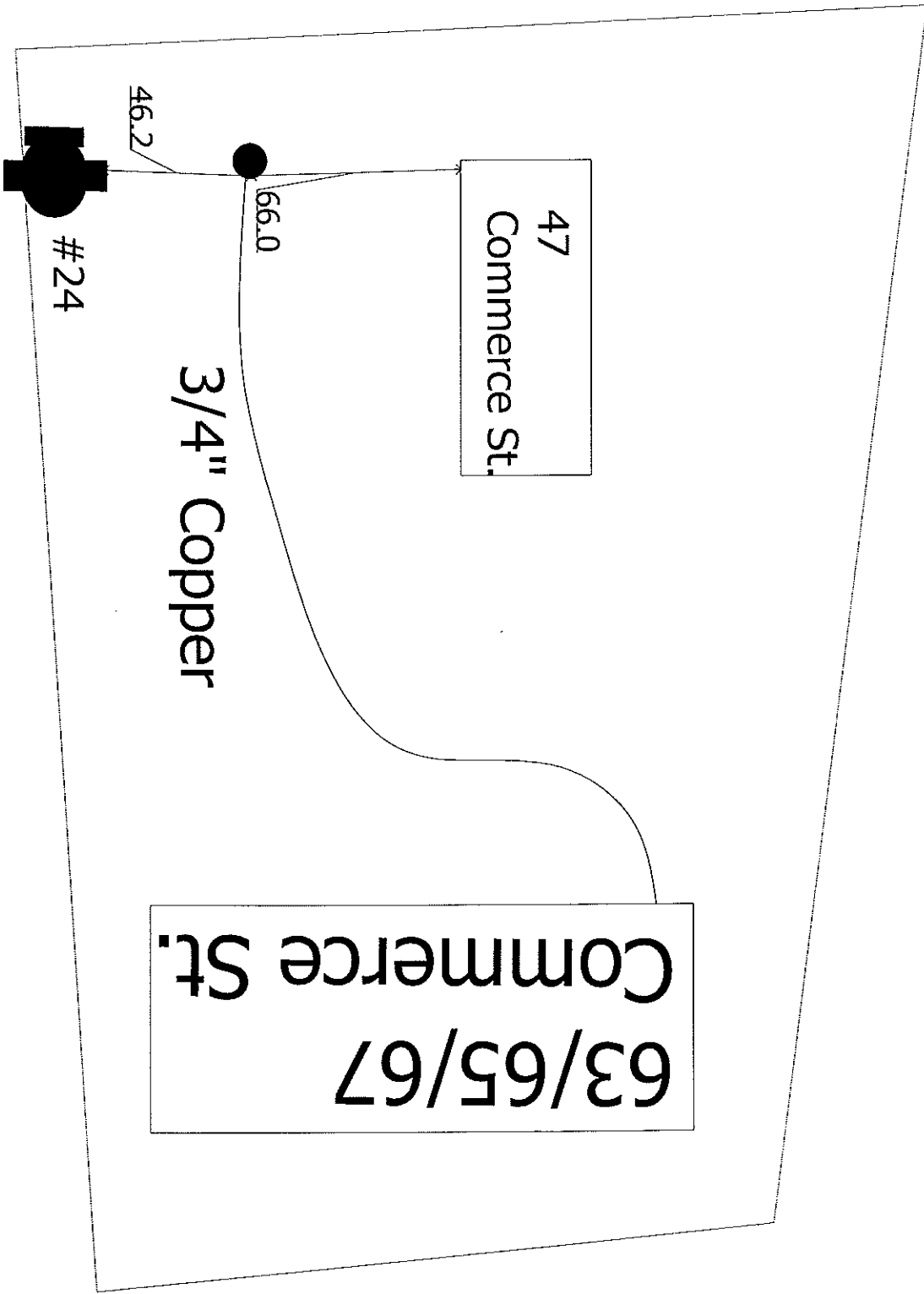
RT #2



Commerce ST

71.3





47  
Commerce St.

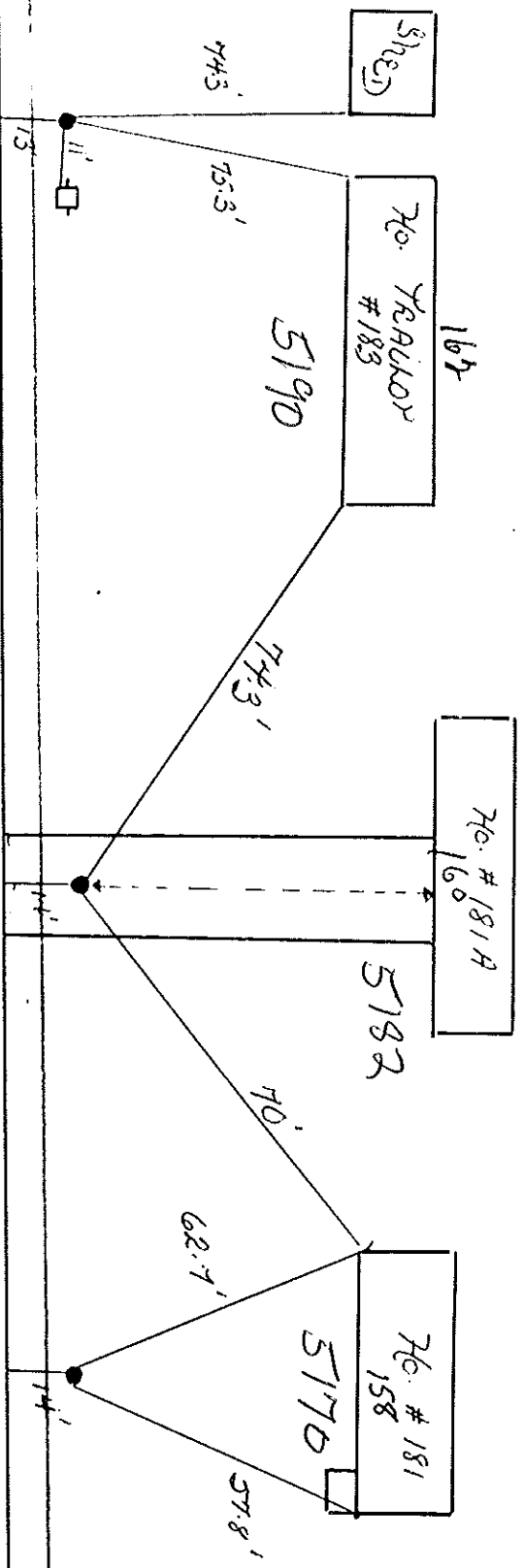
63/65/67  
Commerce St.

66.0

46.2

#24

South



West

East

Route 2

5190

70. TRAILOR #183

162

5190

70. #181A

160

5182

70

70. #181

158

5170

62.7

74.3

75.3

74.3

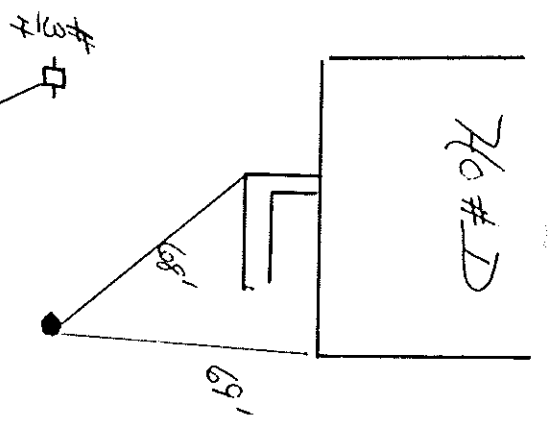
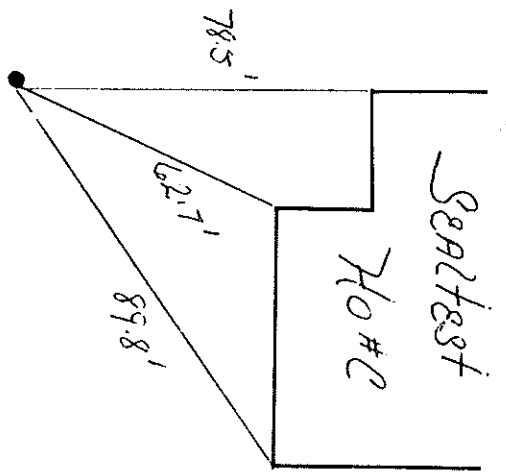
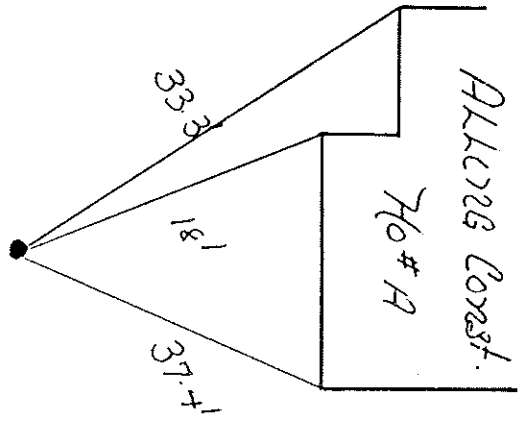
11

13

14

14

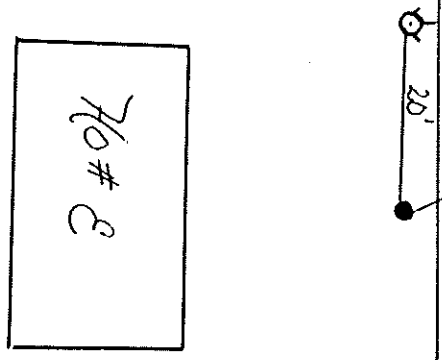
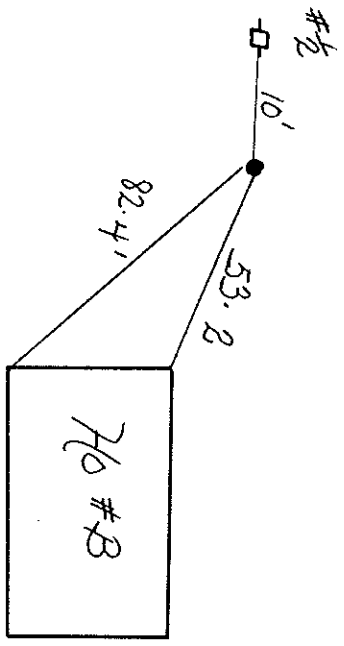
North



North

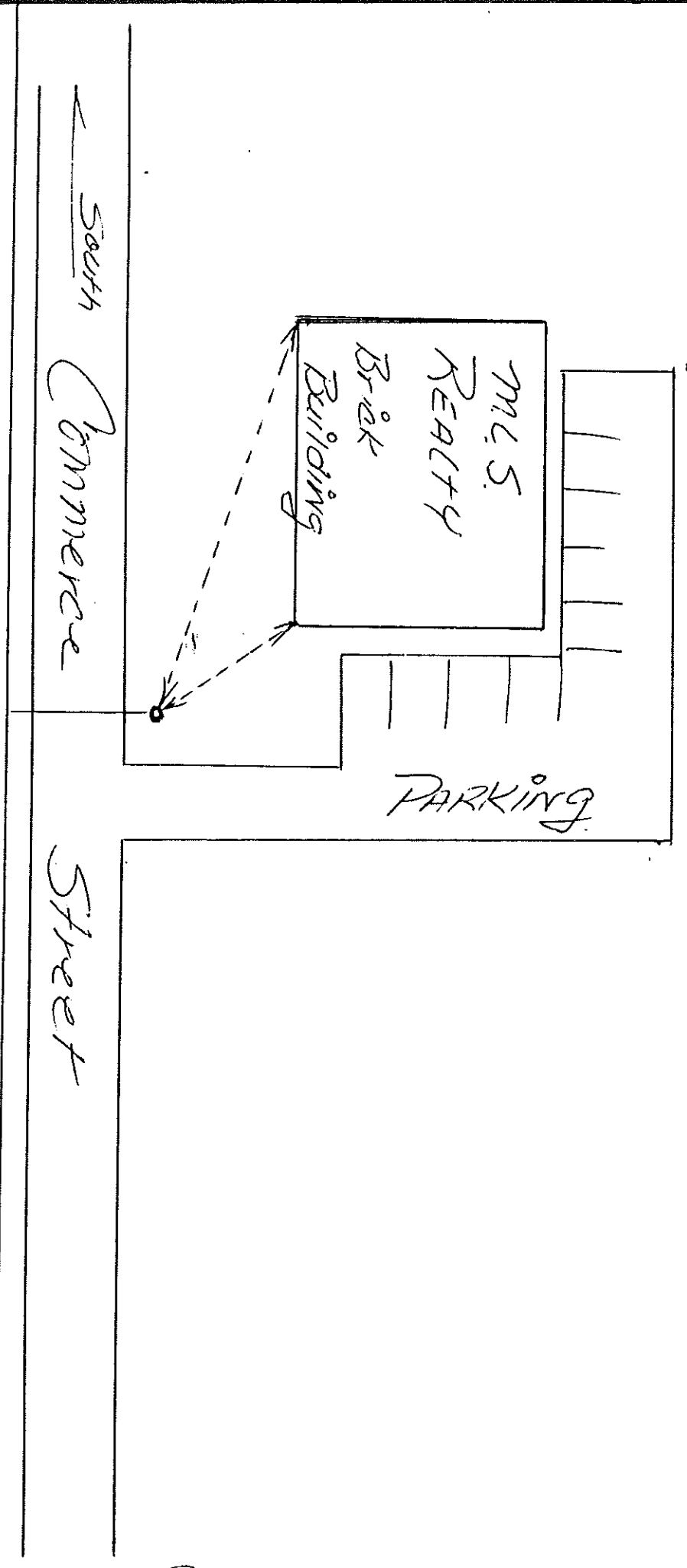
Commerce St.

South

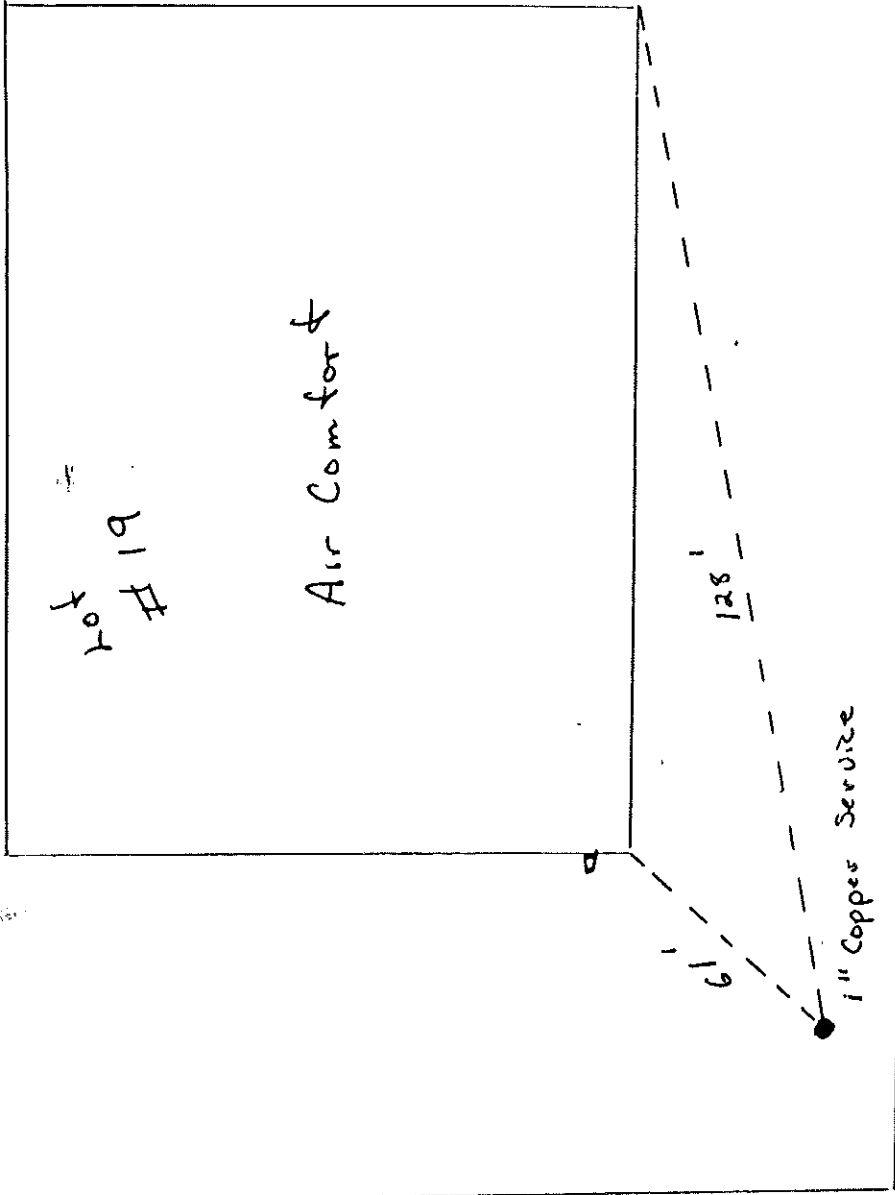


West

Building  
#1 25-27



FRAM R. 7



← to RTR

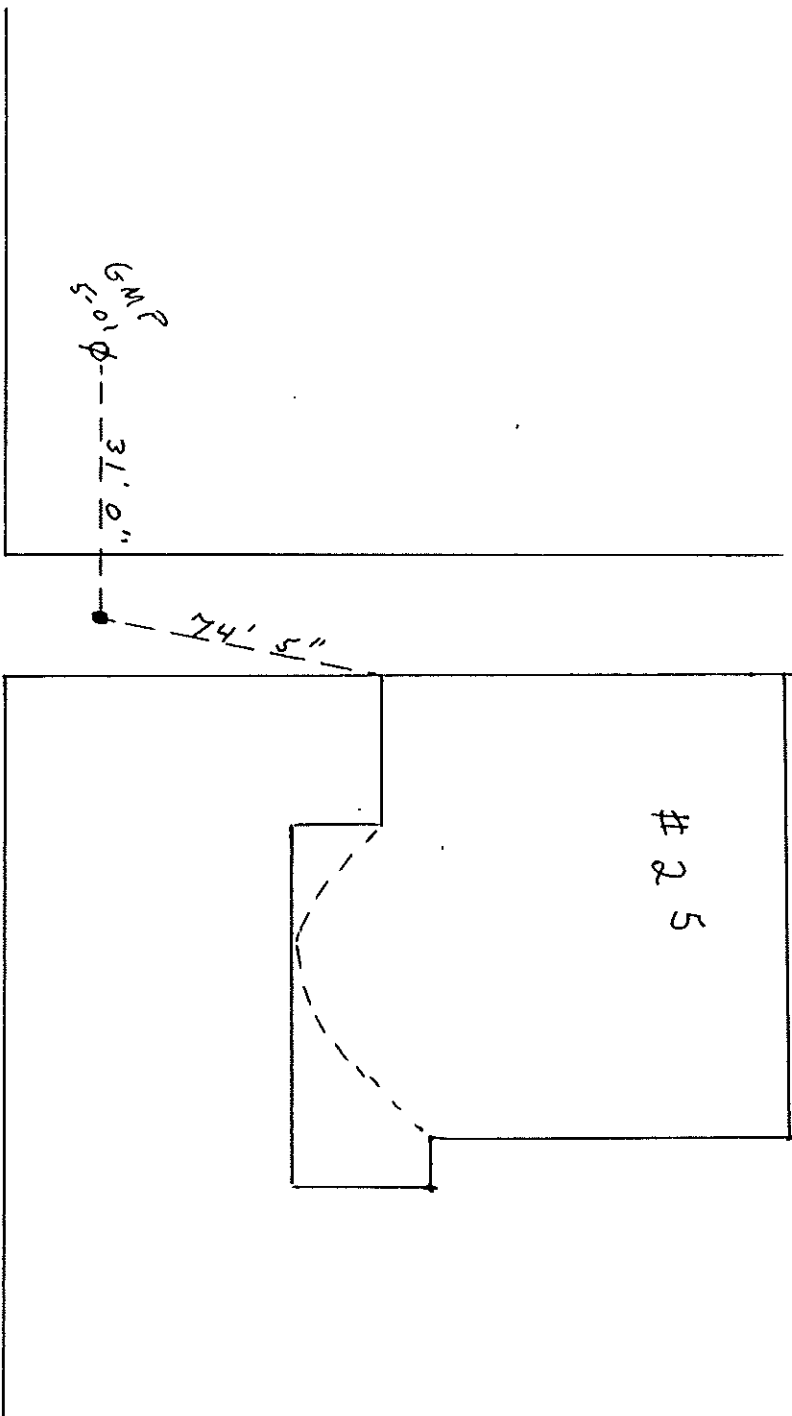
Commerce Street

Commerce St.

Lot #19



1/2" Neptune Ser # 31510700



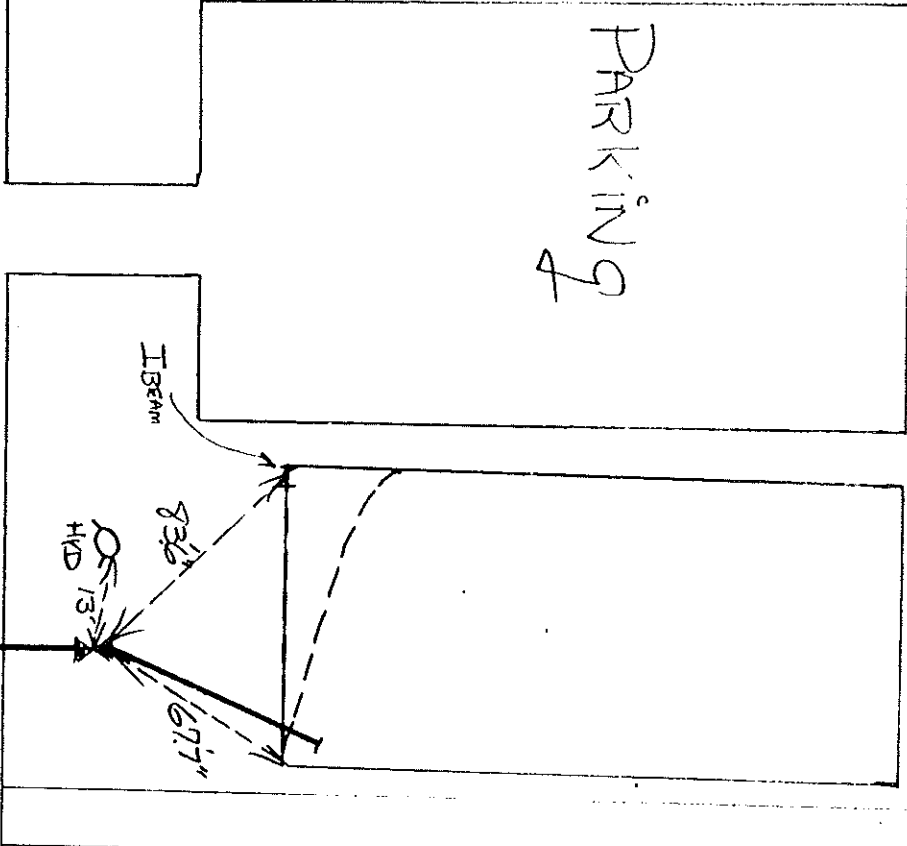
← To RTR  
Commerce St.

Lot # 25  
Commerce St

Lot # 22

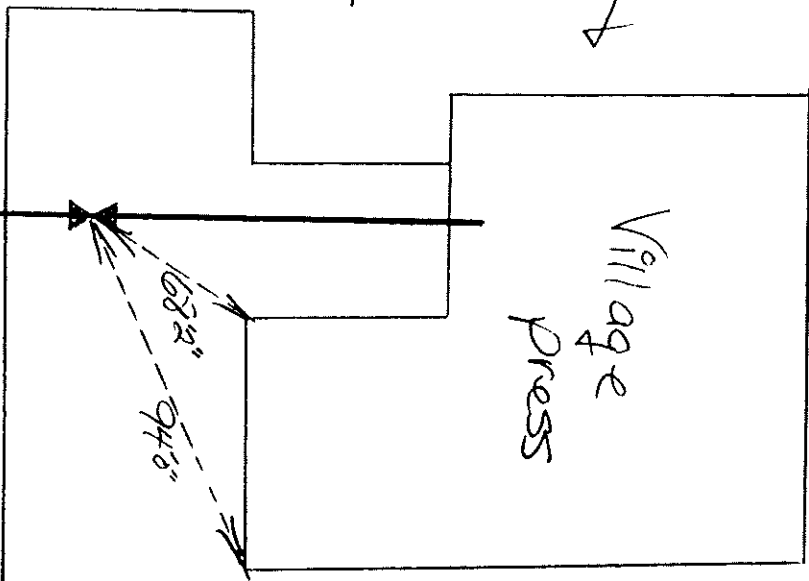
PARKING

Commerce St.



PARKING

Village Press



Lot # 30

2' RC

LOU CIPANE  
Clench

Business

Business

Commerce St. STN

AB Computer  
Trucking

ACB

64'

24.5"

# Hyd  
27

Grid  
Power  
Box

3/4"  
Copper line

Forced

Drive  
Way

Don  
Weston

Construction

Installed Meter  
1/4/90

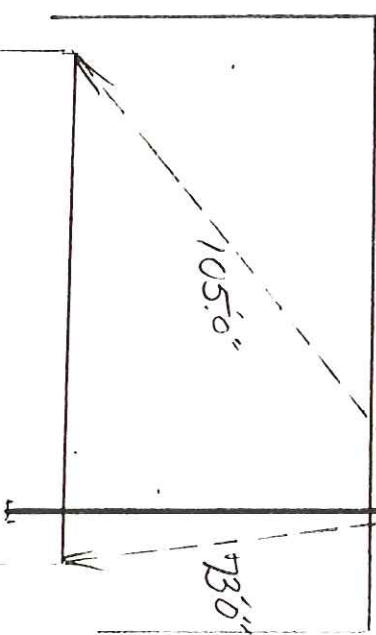
For AB

Const.

2' AC  
Commerce St.

PARKING

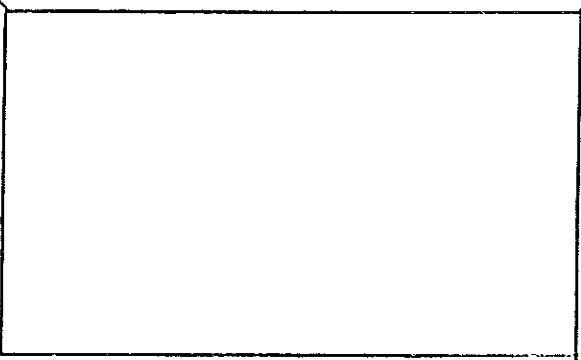
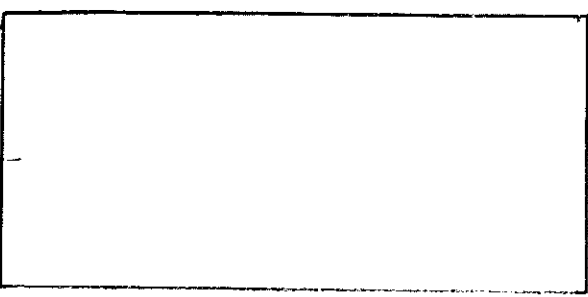
113-  
Carpenters  
Trainers  
Training



North

# 35

# 33



96' 3"

64' 6"

97' 9"

97' 9"

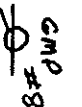


6" DI

57' 7"



6" DI



6" DI

CMP #8

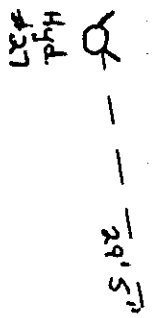
Commerce

10" DI

Street

147' 4"

To →  
W. 113th Road



Hyd #37

29' 5"

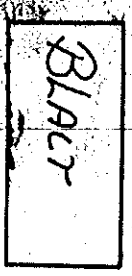
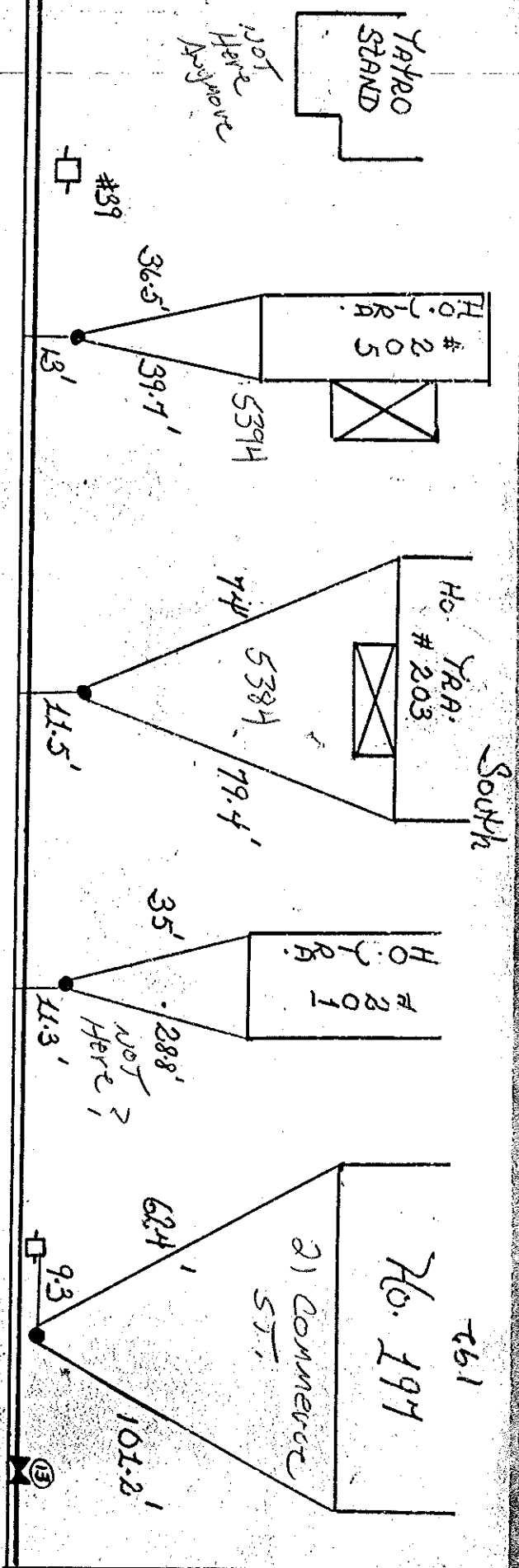
7.1 A.C.



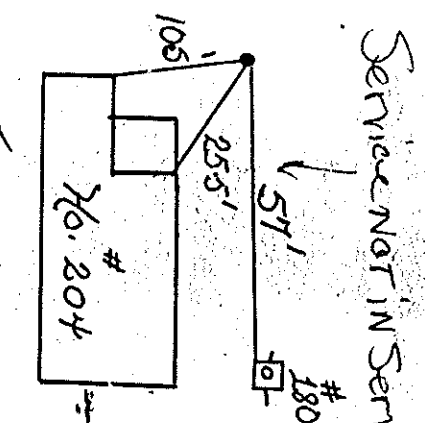
Case #

Rte 2

Commerce St. West



505  
5394



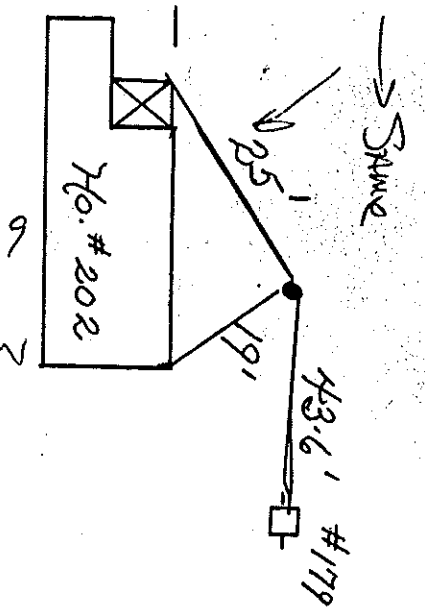
NOT Here!  
new!

32

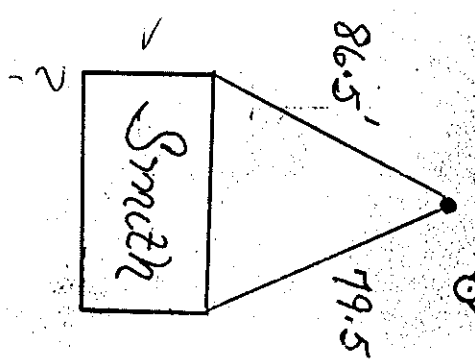
Over Head  
Dairs

(Next Page)

North



691



2

# Existing Building

For unit layout see Blair Building  
by Shelter Design 7/28/94, Sheet A2  
Tyler Scott.

Blair House  
Medical Bldg

bbes

New 4" PVC sch. 40  
sanitary service

New 3/4" copper  
water service.

Approximate location of  
power pole.

Existing 3/4" water service.

Ex. white line

Ex. sanitary service

## U.S. Route 2

to Tafts Corners  
Route 2A

S  
D  
D  
C  
S

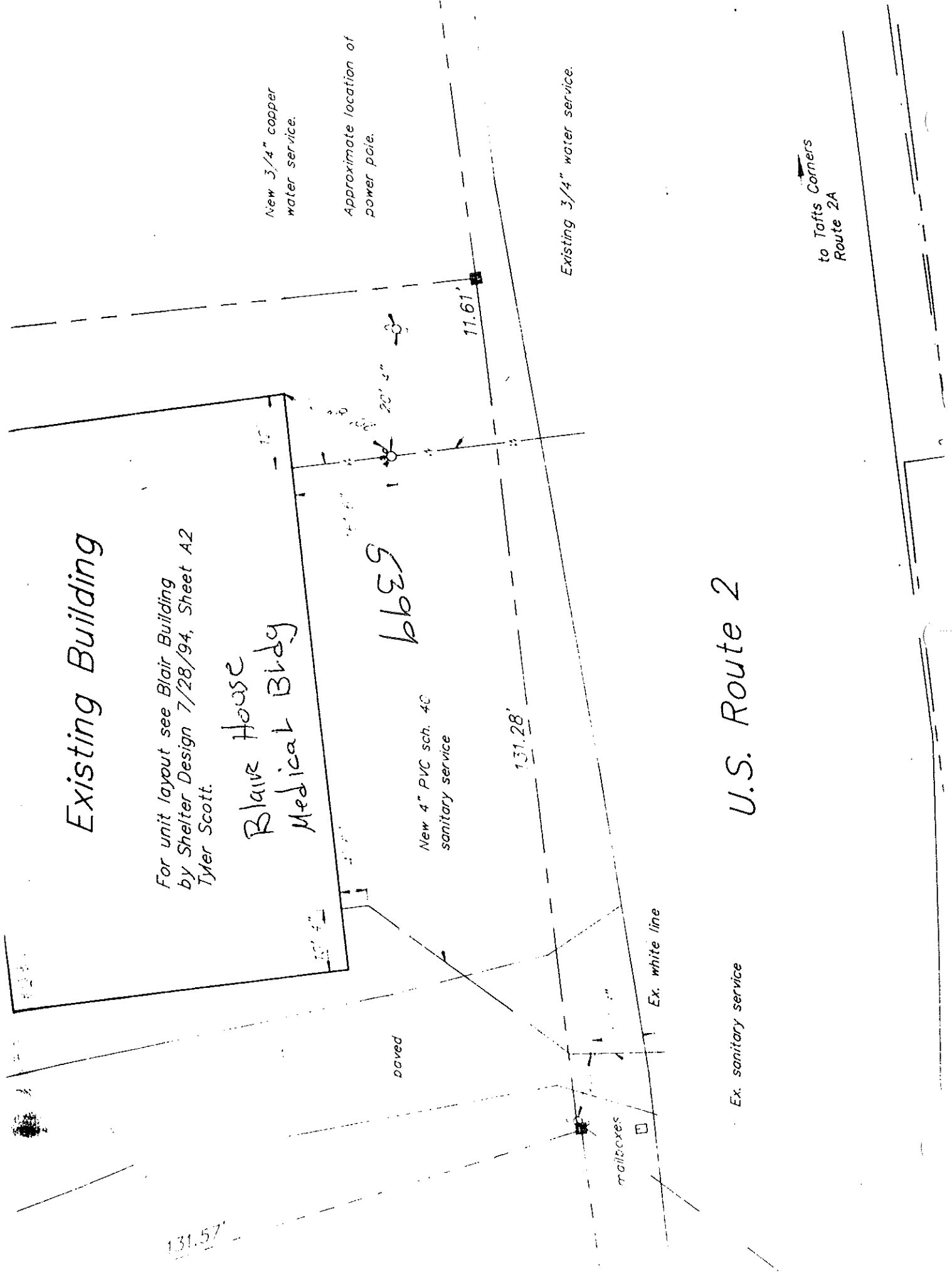
131.57'

11.61'

131.28'

paved

mailboxes



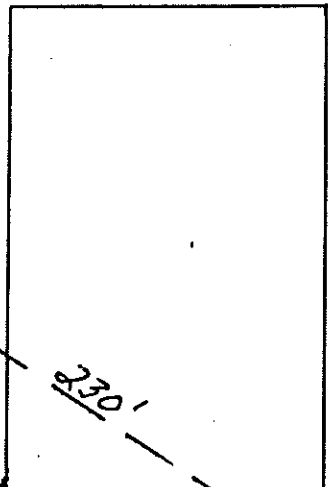
EAST

Route 2

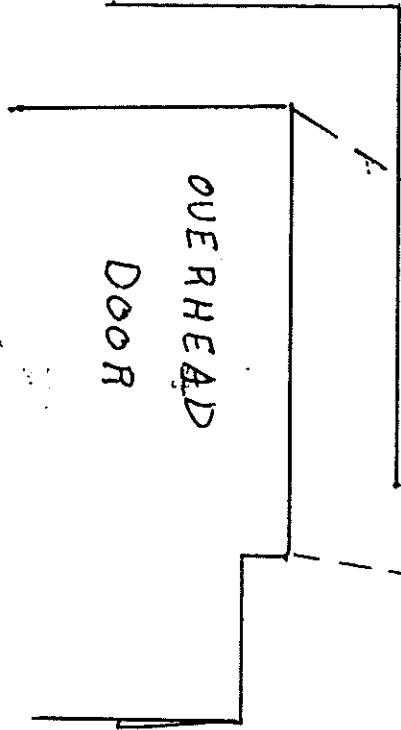
GMP #36

12' AS

Tapping Valve



230'



204'6"

6375

WEST