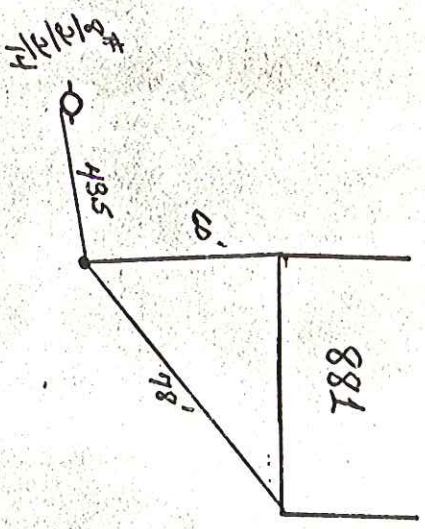


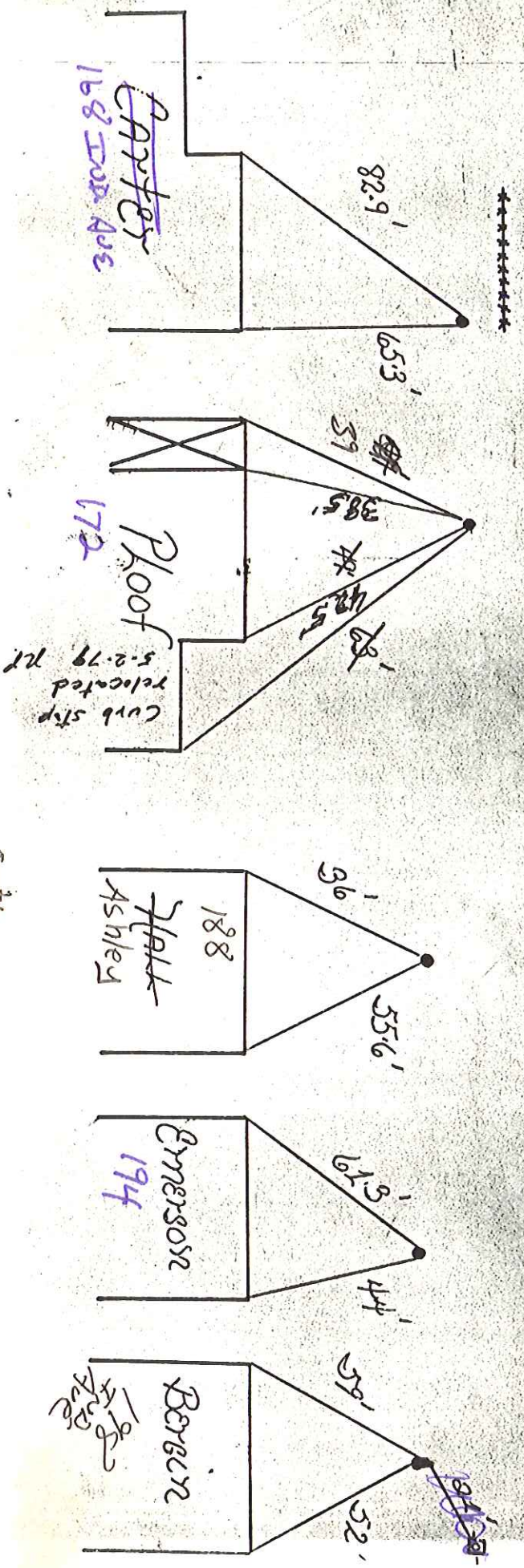
North



West

Industrial Ave.

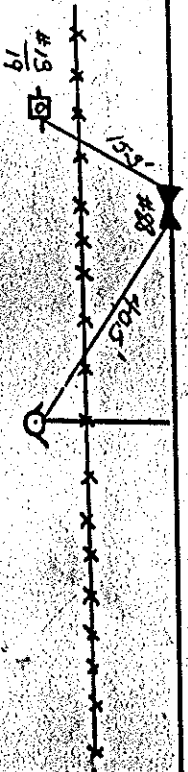
East



5/2/79

INDUSTRIAL

AVENUE

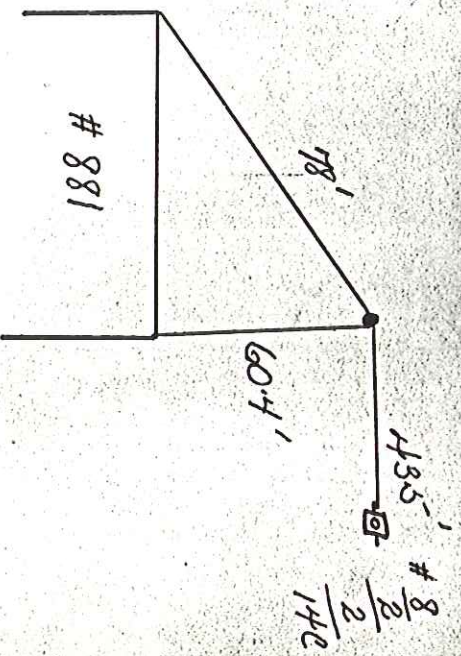
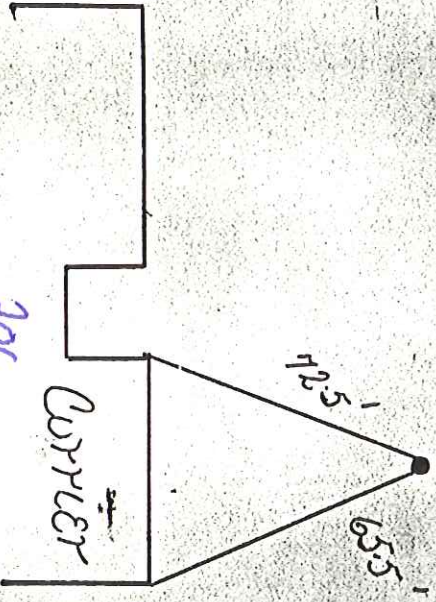


North

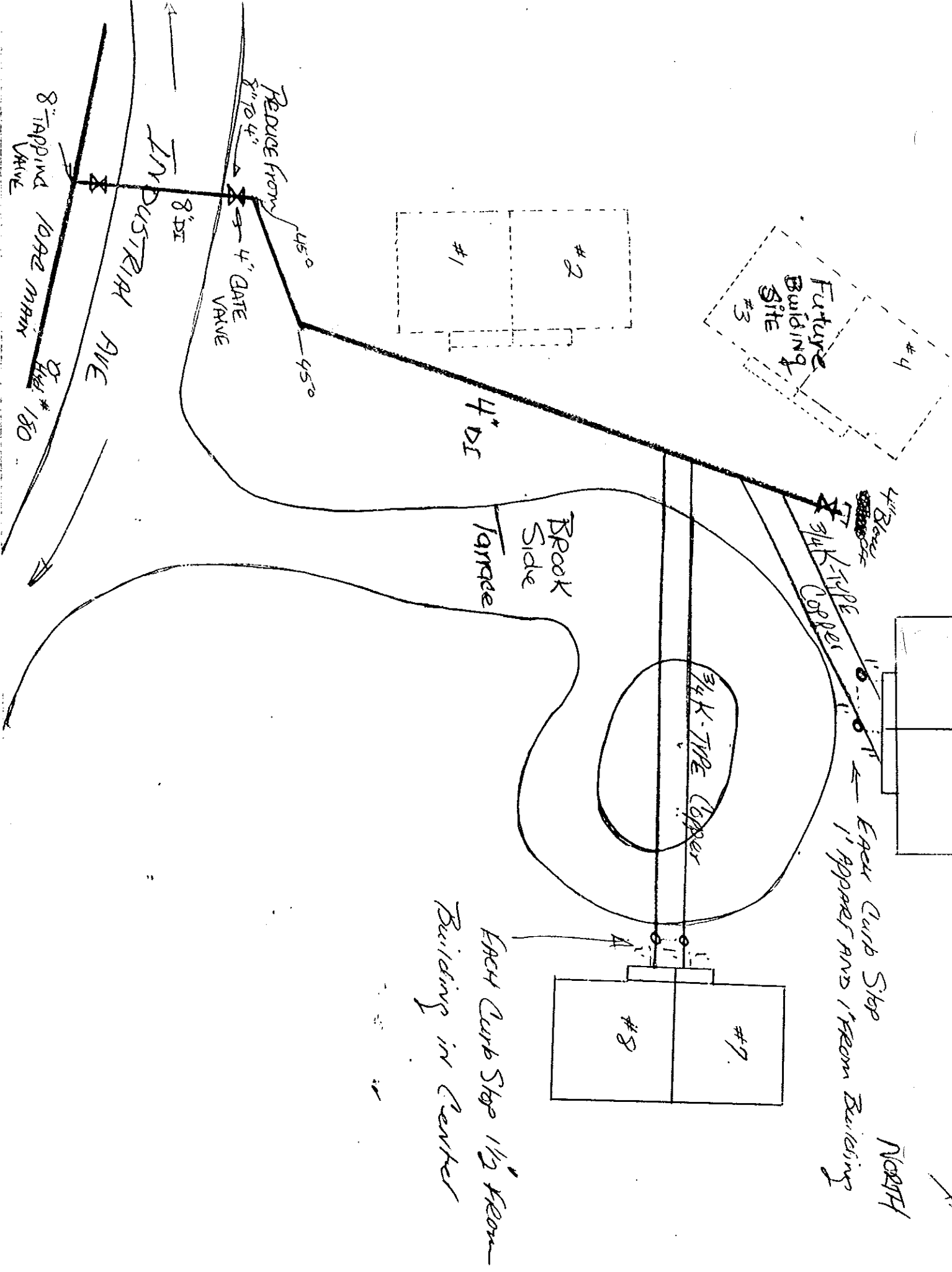
West

INDUSTRIAL AVENUE

East



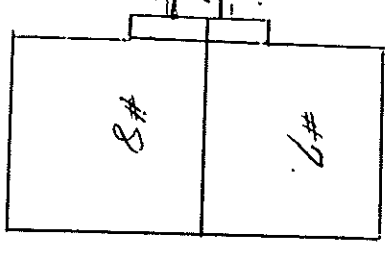
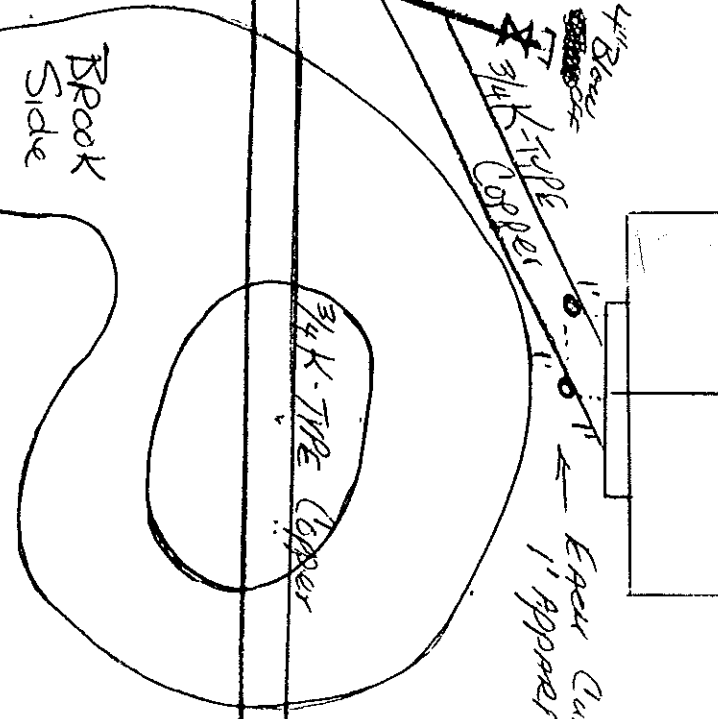
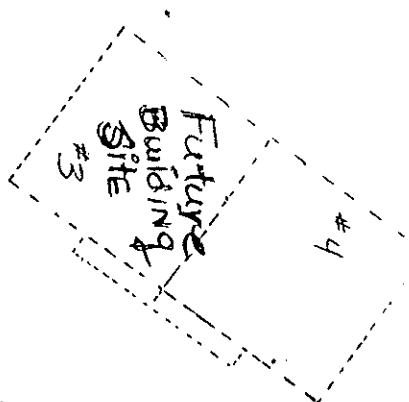
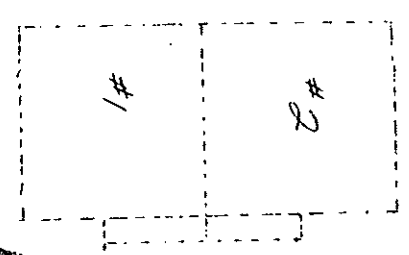
South

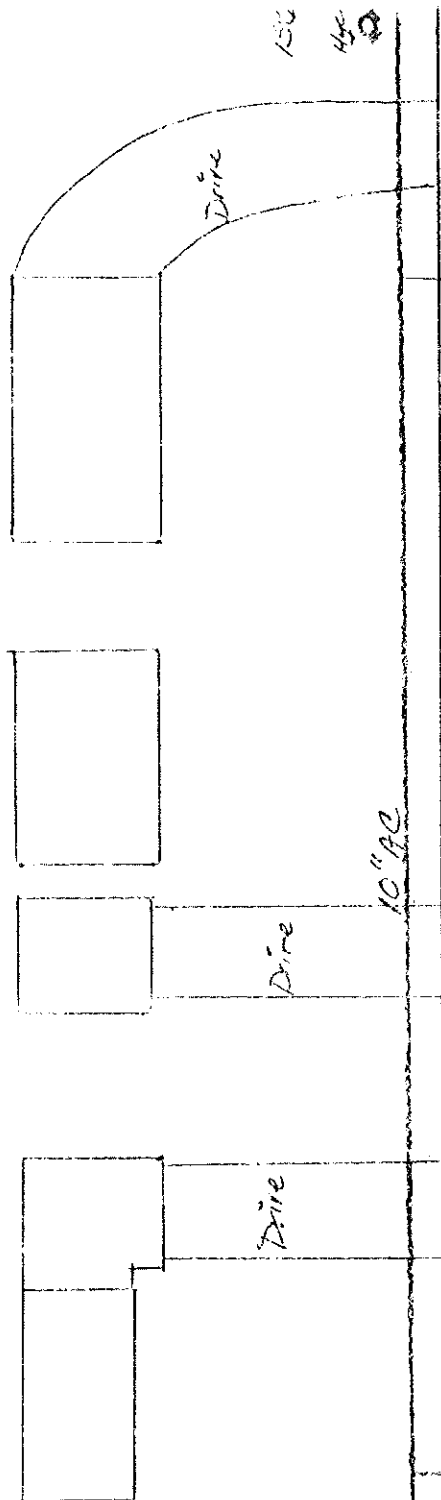


4" Glass
 3/4" K-TYPE
 COPPER
 1" Appears AND 1" from Building
 NORTH

EACH Curb Stop 1 1/2' from
 Building in Center

8" TAPPING 1092 MAIN
 WAVE
 INDUSTRIAL AVE
 8" DI
 4" GATE VALVE
 REDUCE FROM 8" TO 4"
 45°
 45°
 4" DI

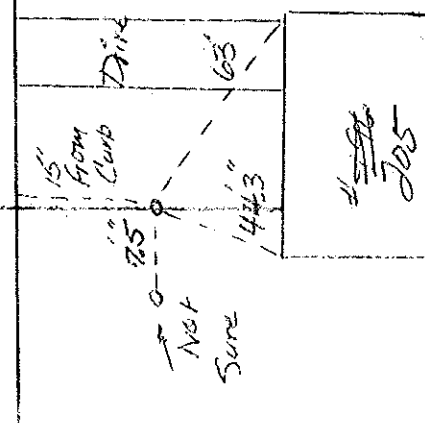
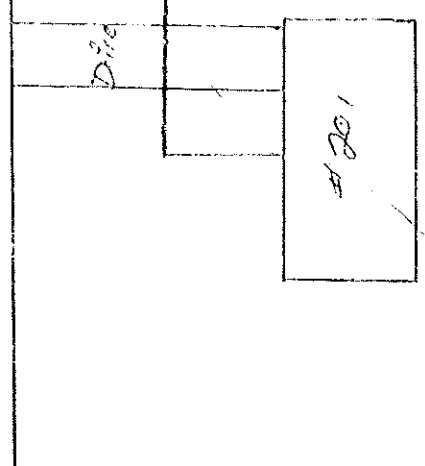
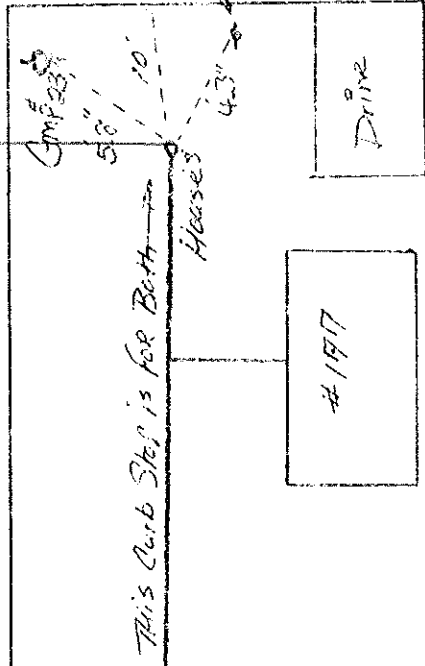




North
S Burlington

Industrial Ave

GAFF
TRPRA
Street sign

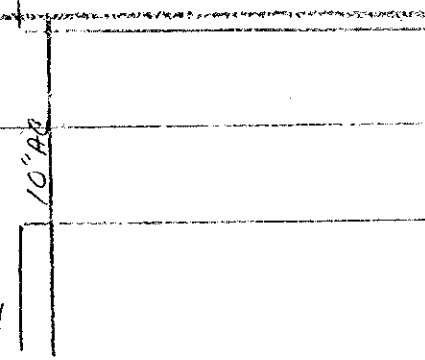


10" AC

RT 2A

Main

View



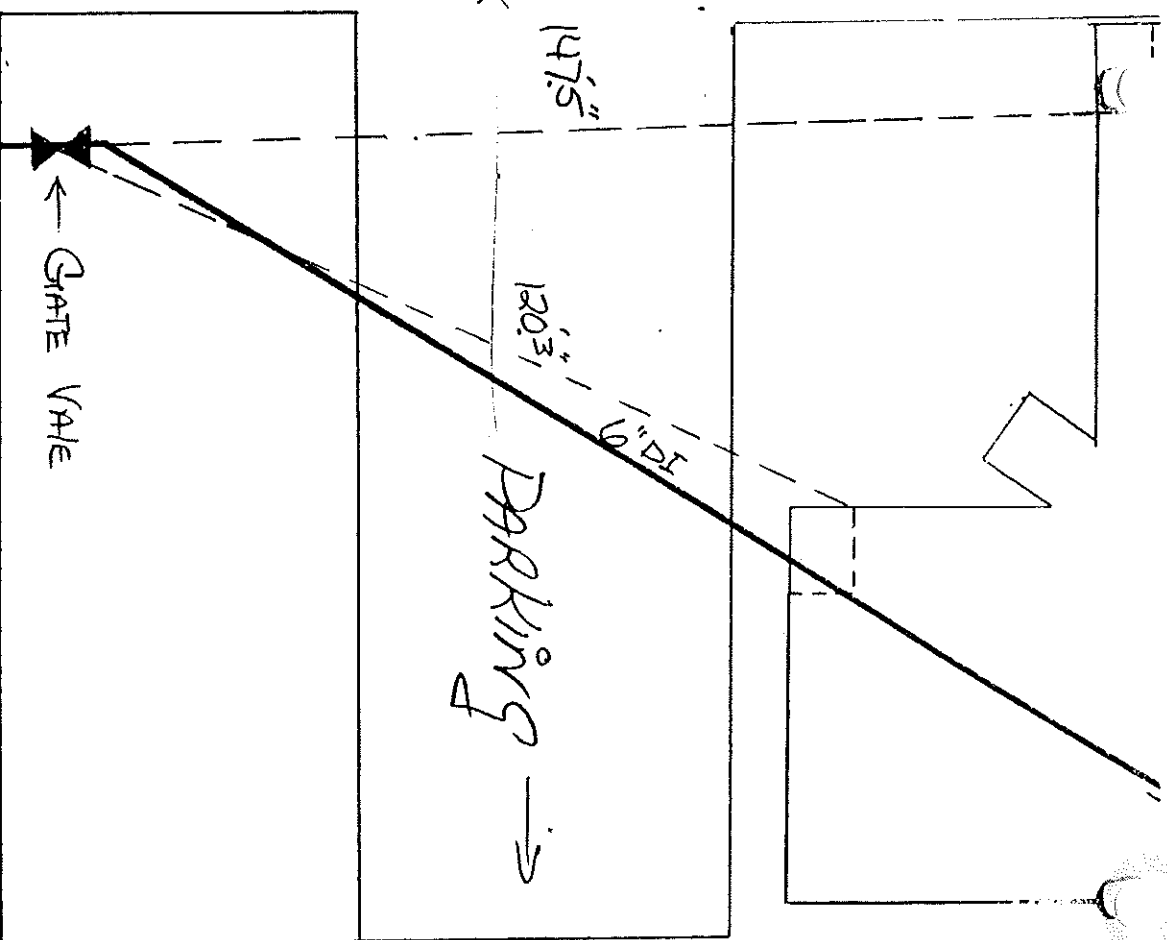
JEBLINE
Lot #13

EAST
AVE-D#

WEST

South

8' DI

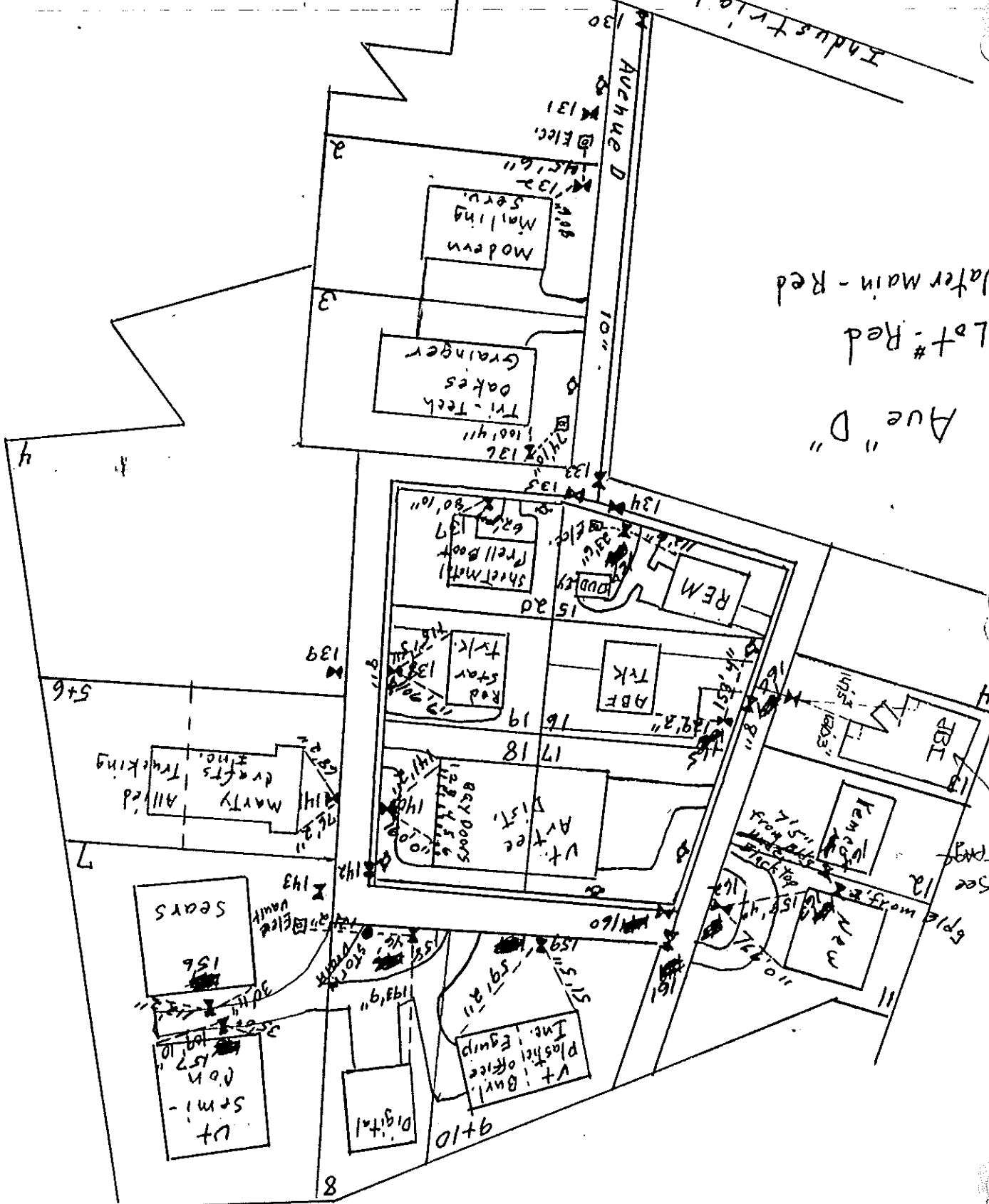


NORTH

Industrial Ave

Ave "D"
Lot # Red
Water Main - Red

Avenue D



123 Industrial Avenue

Ind. Ave.

Ave. "D"

10" A.C.

new c.s.
11/30/93

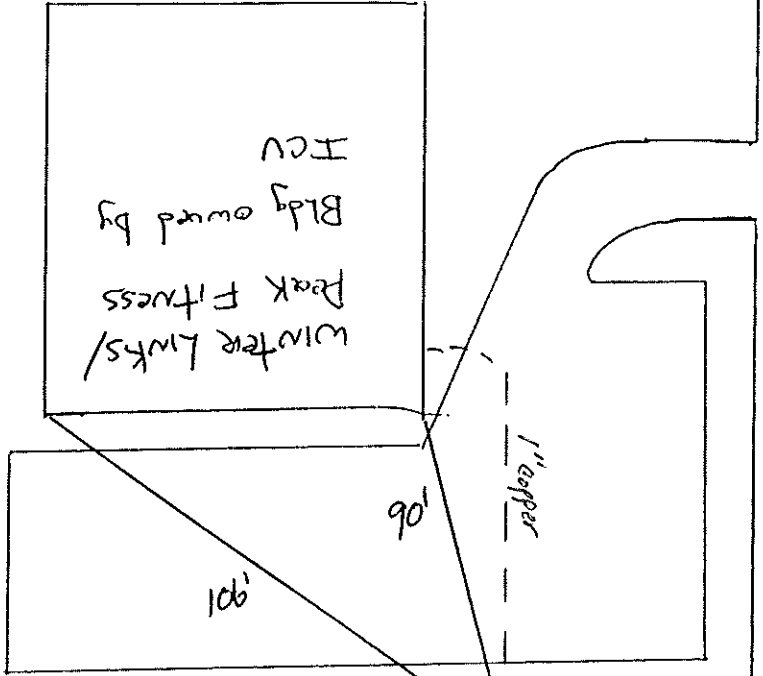
1" copper

1" copper

'06

'90

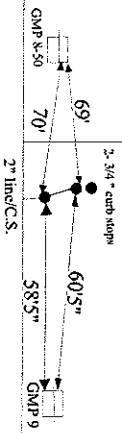
Winter Links/
Peak Fitness
Bldg owned by
ICV

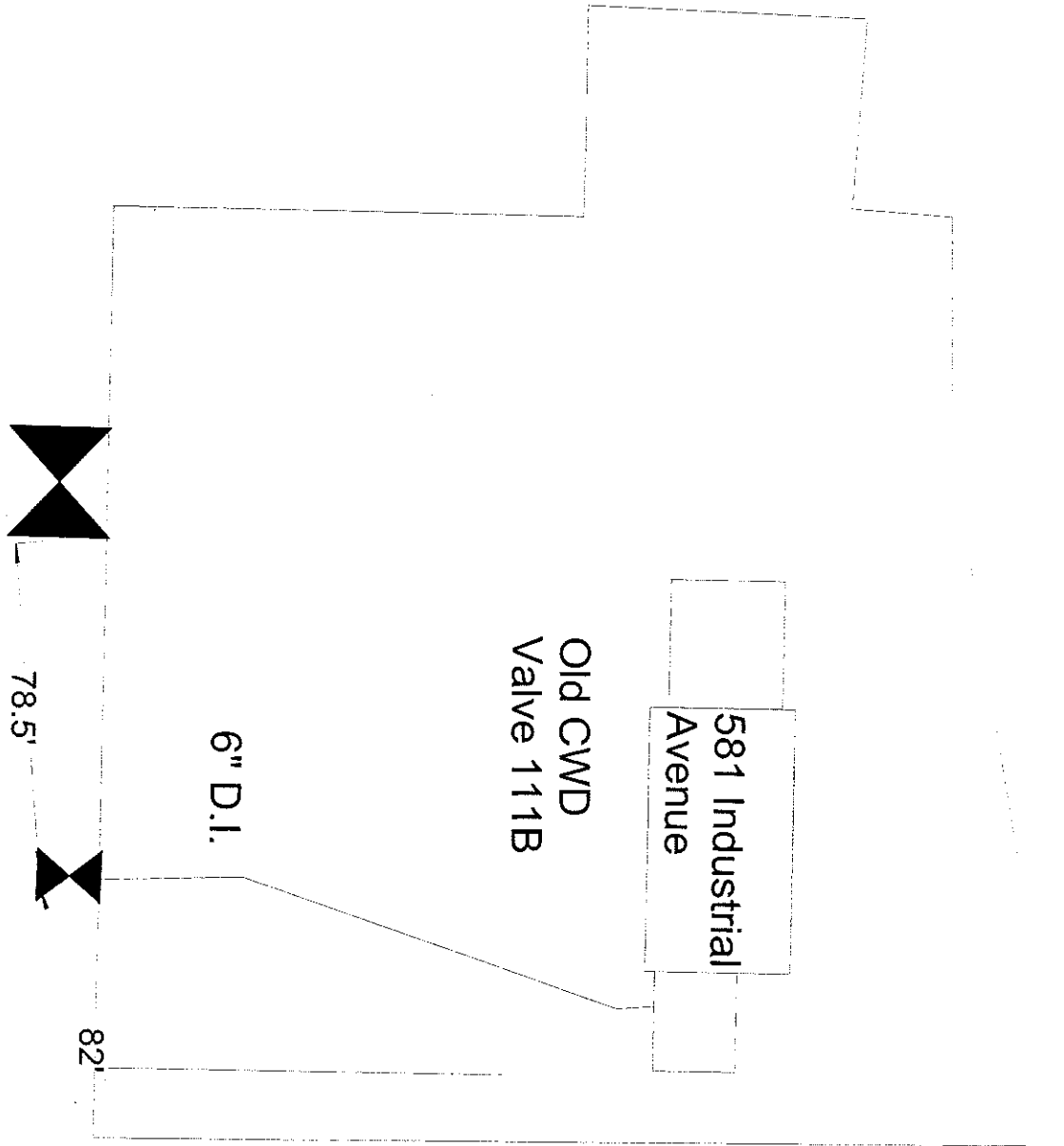


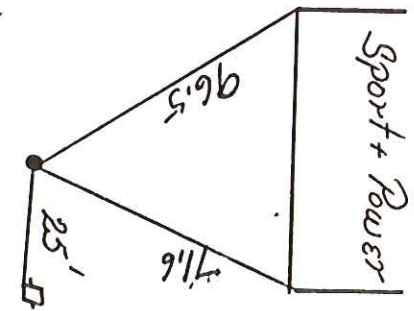
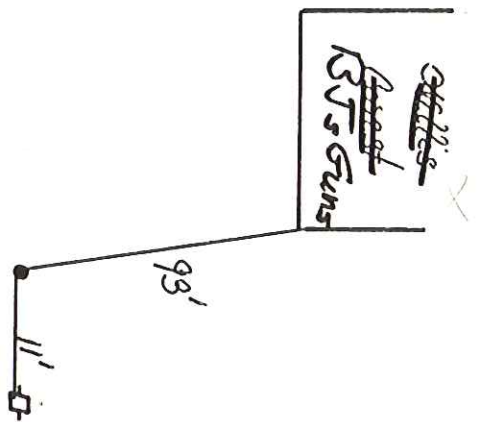
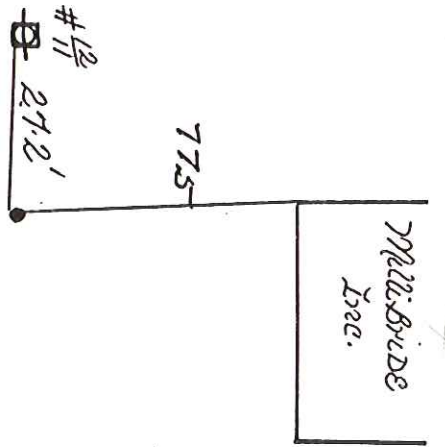
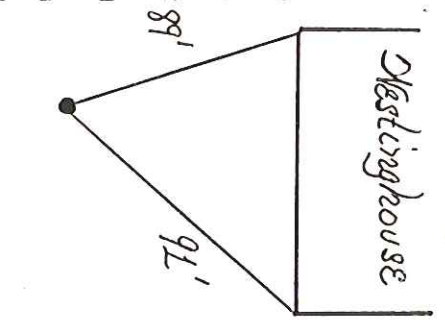
323

COCO 417

Industrial Ave







West

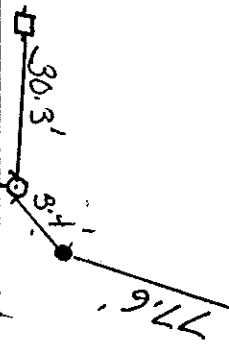
INDUSTRIAL DRIVE →

Do Over

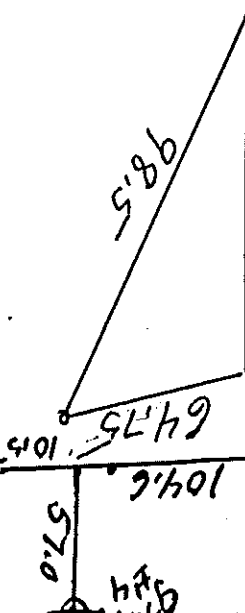
DWEST

A
A
P
P

Herzogway



New England
Air Systems

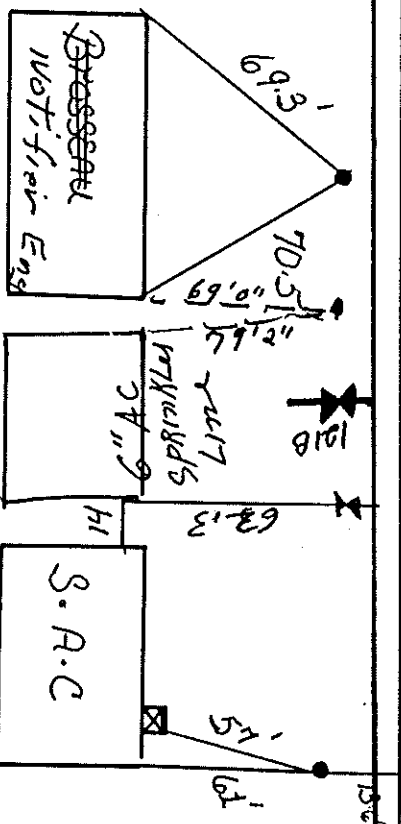
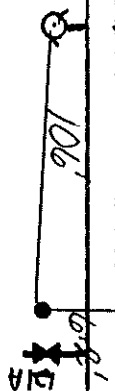


Pressure C

5-100

WISB

VELA72
VALVE



Pressure
100' floor Eng

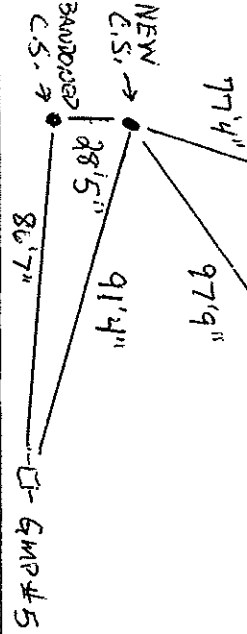
6" AC
VALVE

S.A.C

100

WAS WE88

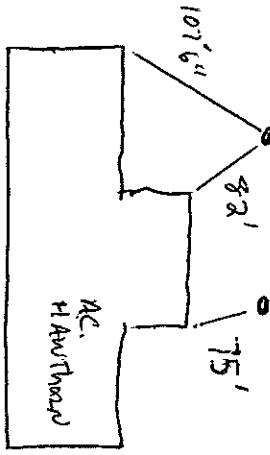
CSWD



AVENUE C

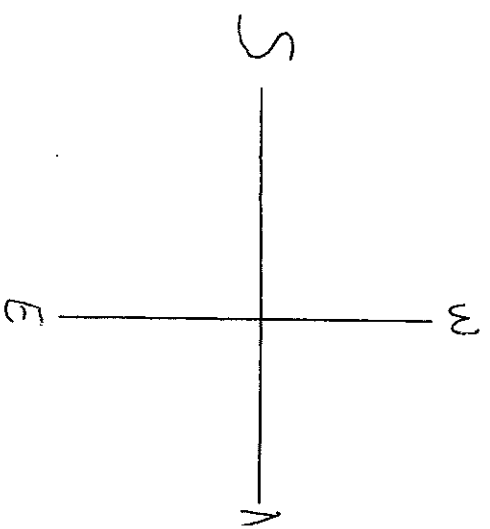
150'

GMP# C



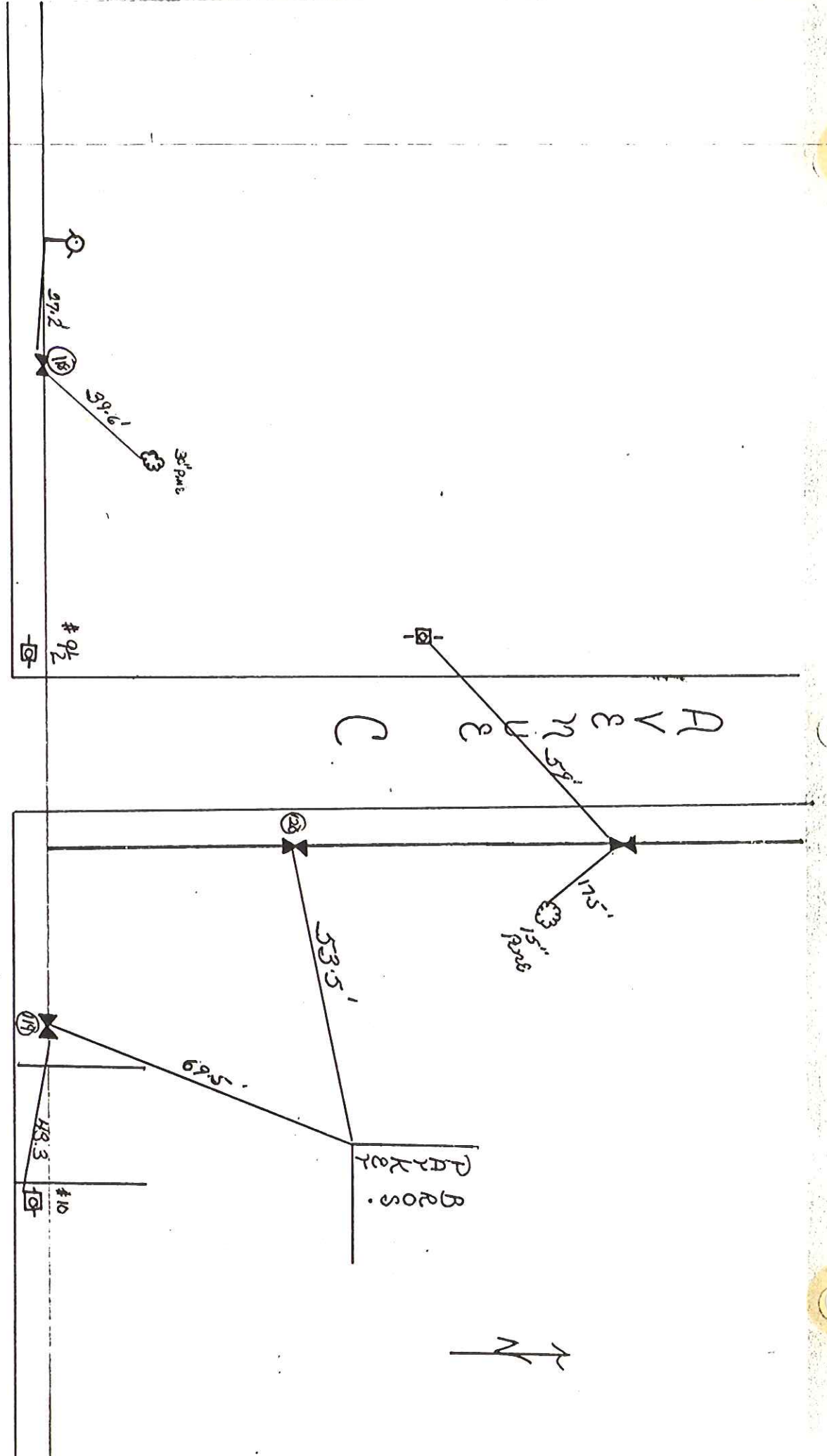
WAS AZTEC

CSWD



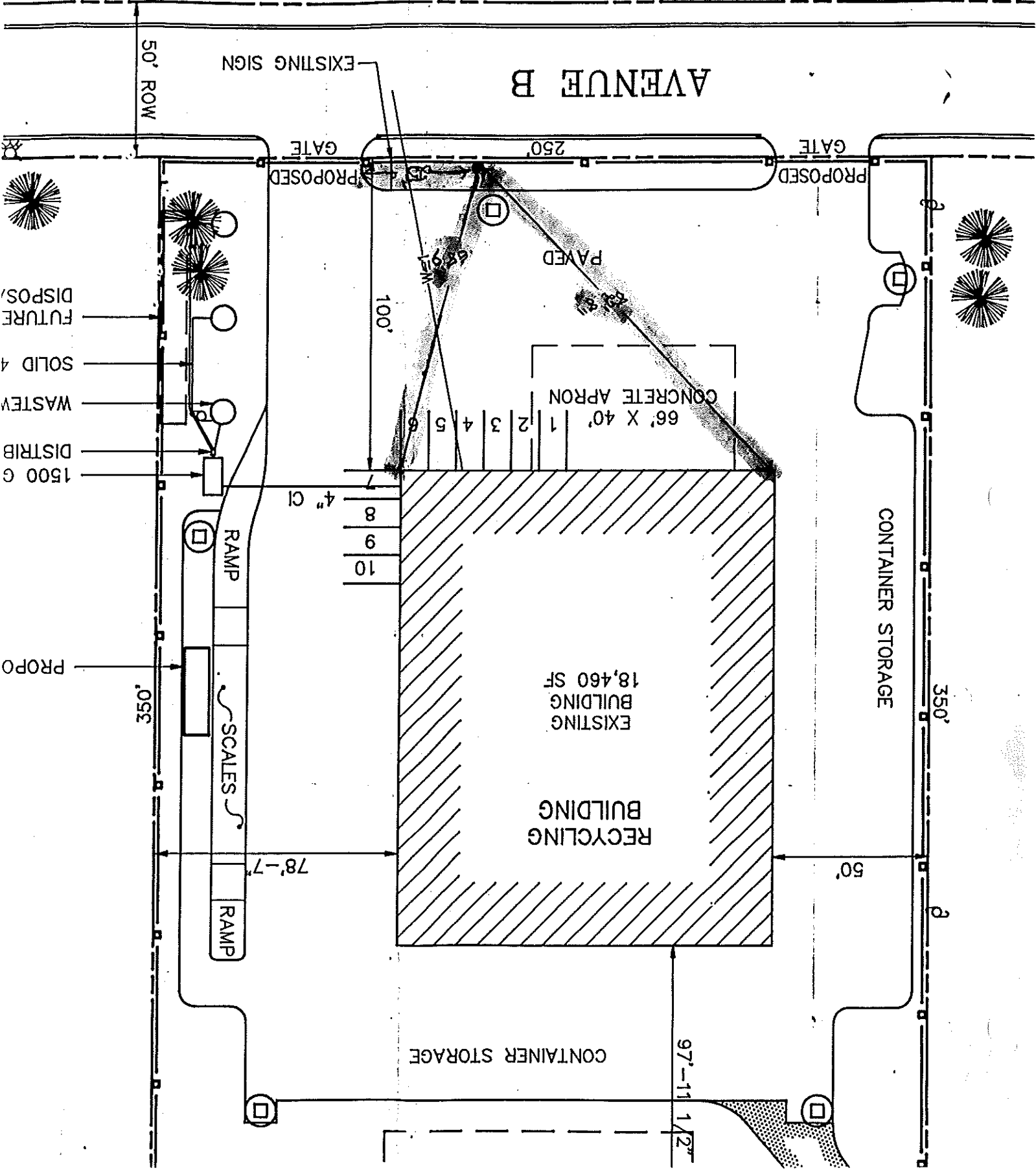
Industrial

Avenue



N/F
SHELburnE SHIPYARD INC.

AVENUE B



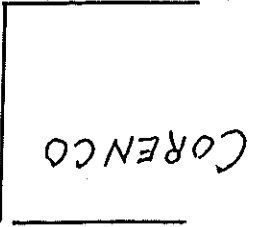
pole #7

51' 6"

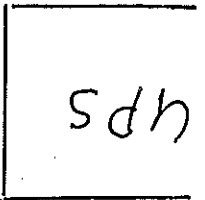
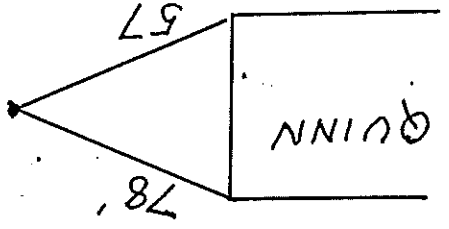
AVENUE B

11' 1"

Hydronix
150

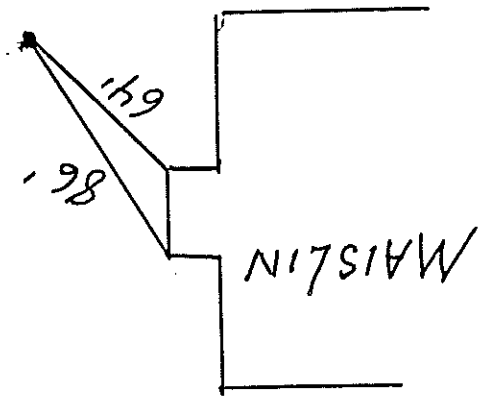


101'

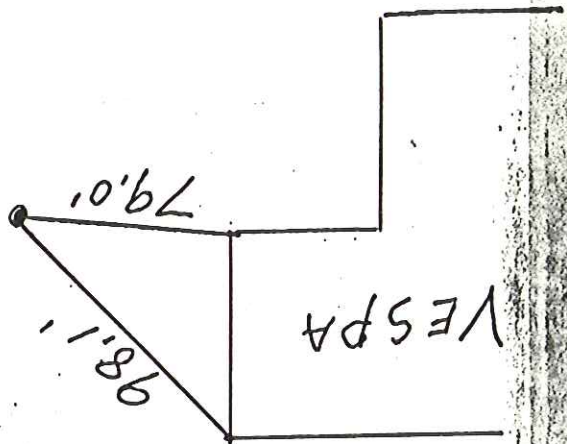
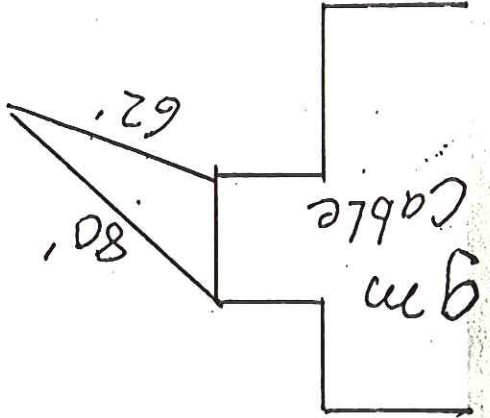


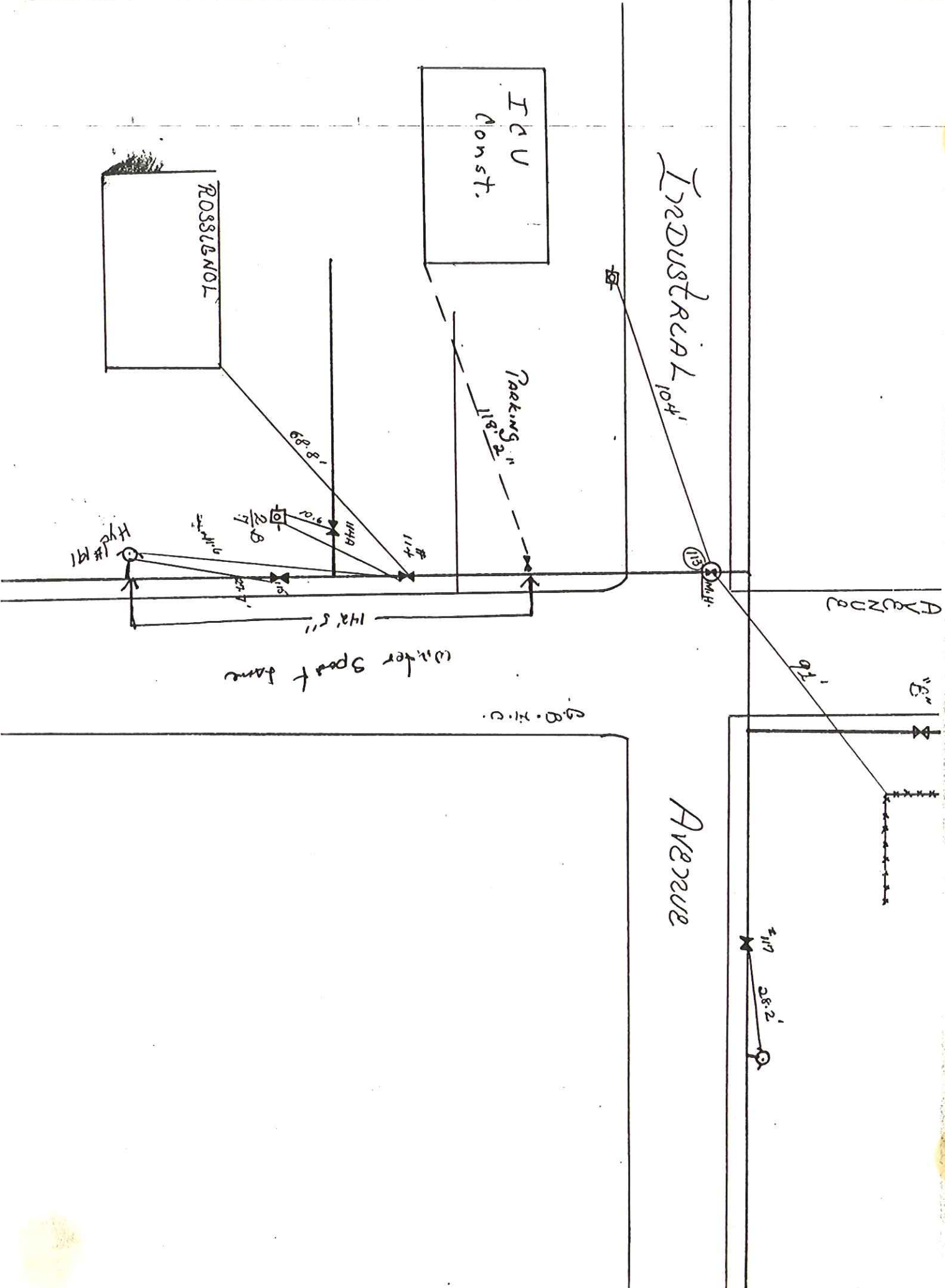
95'

121'

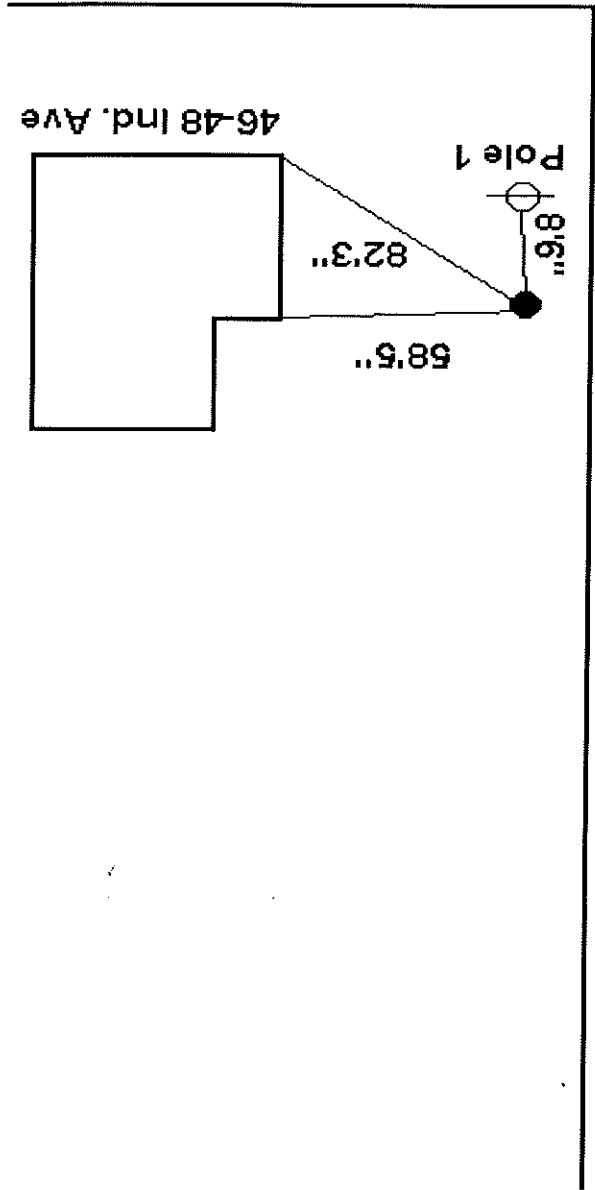


AVENUE "B"

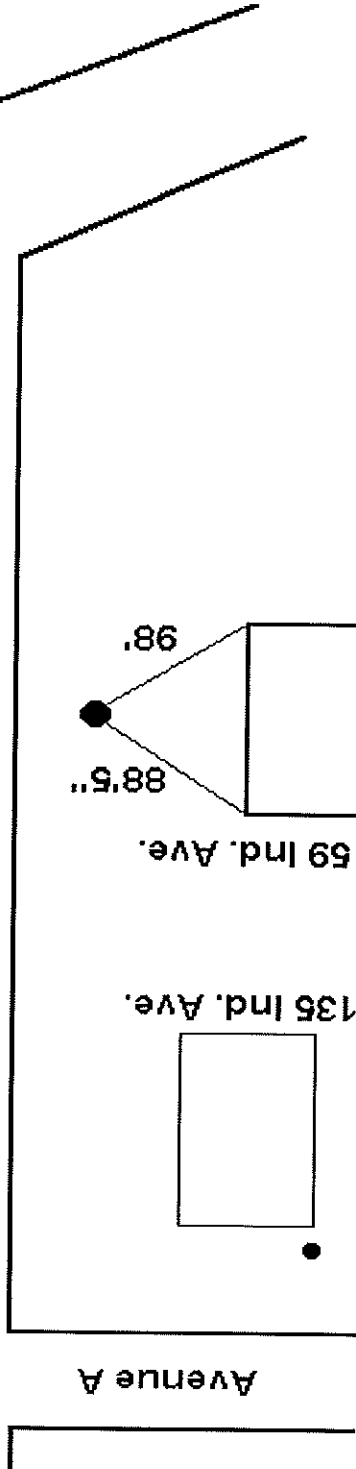


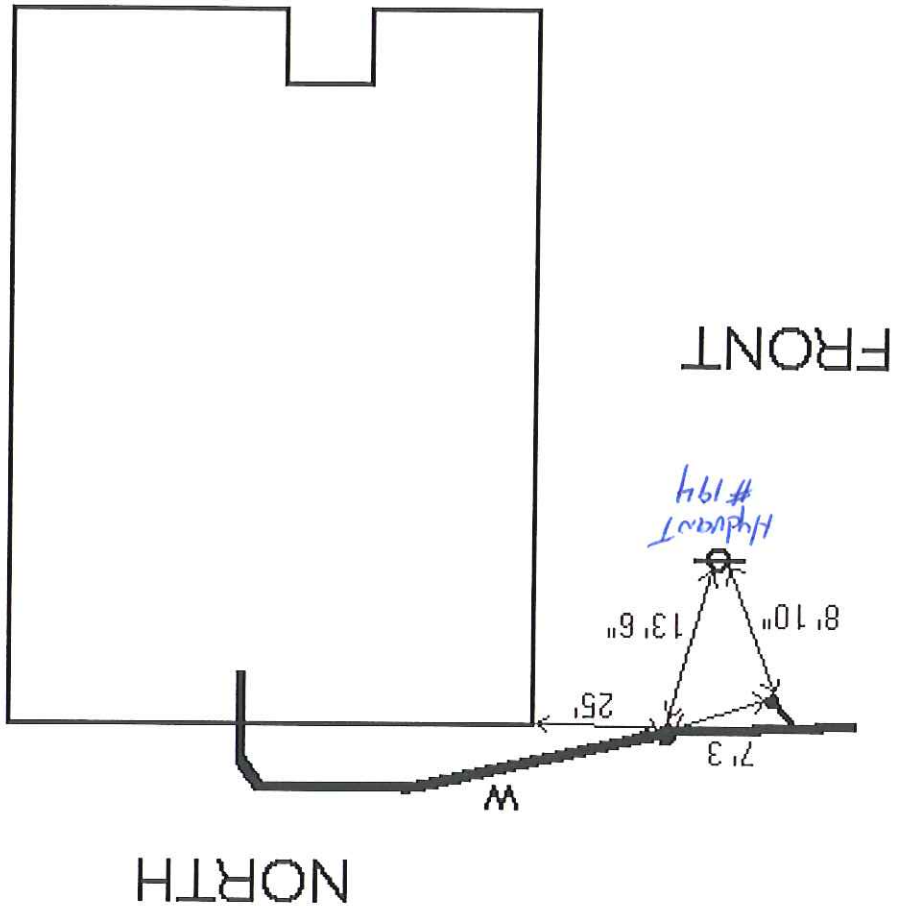


WILLISTON RD. TO TAFT CORNE



INDUSTRIAL AVENUE





JOHNSON FILAMENTS