

15'

21,700 S.F.
CURVE DATA
 $\Delta = 79^\circ 53' 02''$
 $R = 119.42$
 $L = 166.50$
 $T = 100.00$

8" SDR 35 PVC
x 198 LF, S=0.0226

STA. 16+60 END OF
CURB & SIDEWALK

M.H. 4, STA. 16+81.38
RIM = 395.49
8" OUT = 389.0

UNDERDRAIN CLEAN-OUT,
INV. = 389.3

EXISTING
GARAGE

EXISTING
HOUSE

T. & A. BLACKER
N/F

UNDERDRAIN CLEAN-OUT
INV. = 389.3

Temporary
Topsoil
Storage

20,050 S.F.

20,000 S.F.

100' (TYP.)

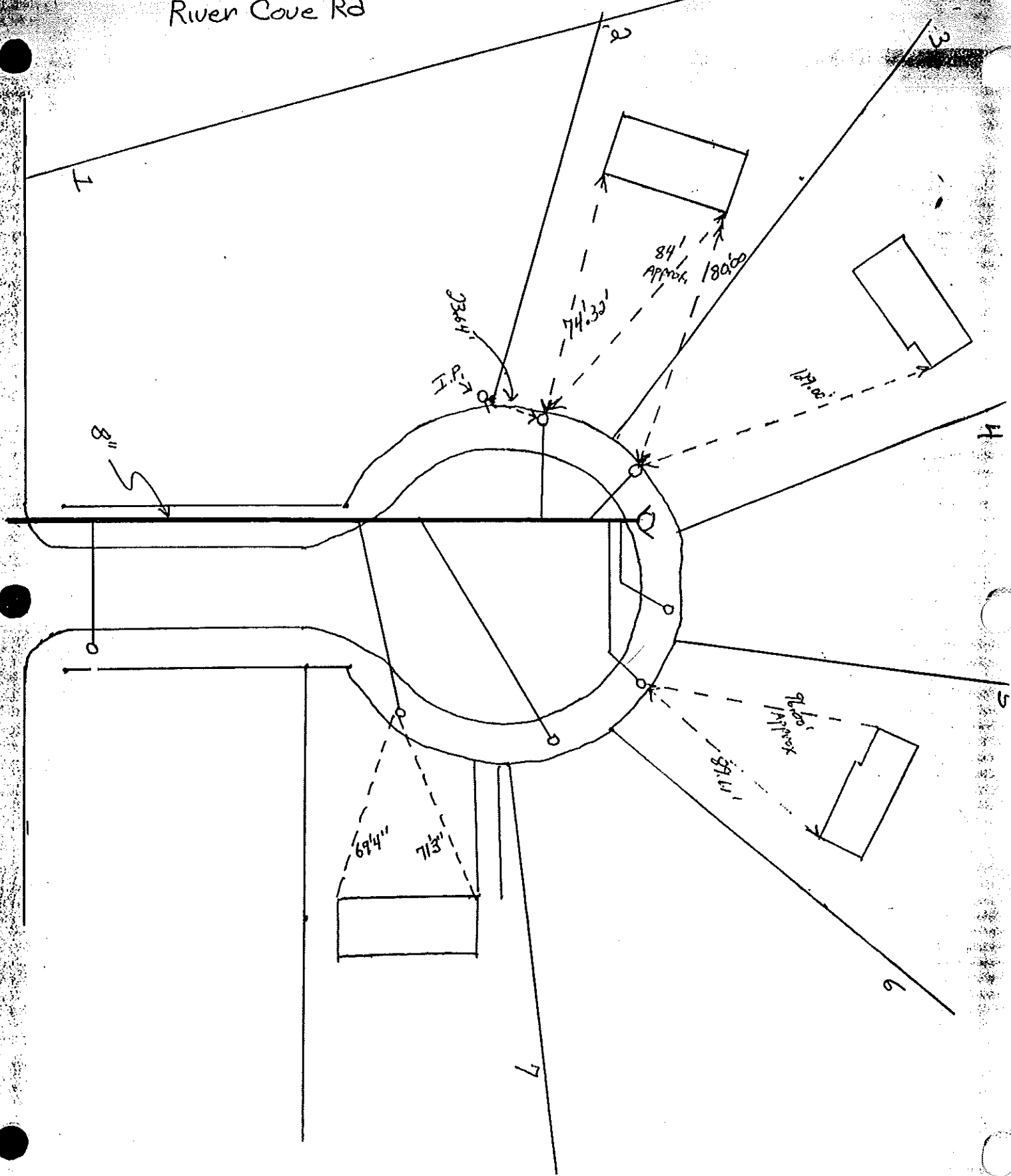
N/F

PRINGLE
N/F

157

16

Savage Development River Cove Rd



HAYBALES IN SWALE 50' O.C. TYPICAL

FM

MH-1
RIM 370.8
NV. 365.4 DESTROYED
NV. 364.5 (162.07)
NV. 365.0 (13)
NV. 363.7 OUT

SEE SHEET 5
FOR WATER AND SEWER
CROSSING DETAIL
MAINTAIN 18"
VERTICAL SEPARATION TYP.

373

4" DI

CLEAN-OUT
(TYP.)

4" SDR 35 PVC
•.054

RECORD LOCATION
(TYP.)

4" SDR 35 PVC
•.032

SIDEWALK
(TYP.)

13
FFE
373.0/376.5

NV.
368.5

4" SDR 35 PVC
•.042

4" SDR 35 PVC
•.052

4" SDR 35 PVC
•.032

3/4" K-COPPER
SERVICE

3/4" K-COPPER
SERVICES

14
FFE
373.0/378.5

NV.
368.5

372

372

CONCRETE
ENCASEMENT
(TYP.)

375

372

NV.
368.0
367.50

15
FFE
372.5/376.0
369.0

NV.
368.0
367.55

16
FFE
372.5/376.0
369.0

375

367.0

375

374

373

372

373

373

LOCATION

PROVIDE RIPRAP